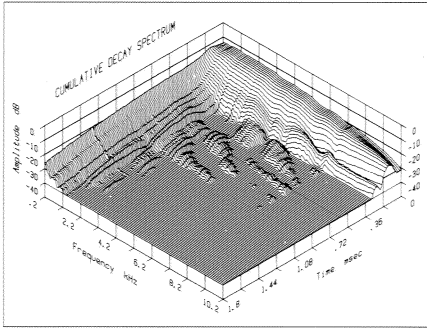
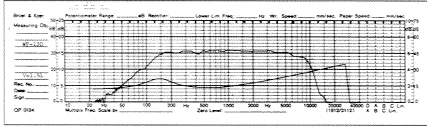
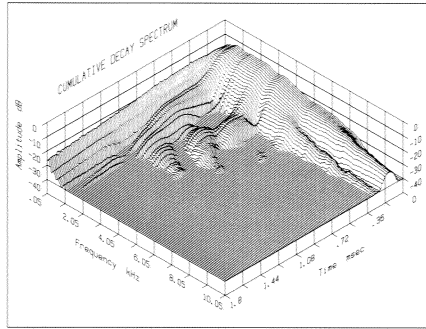
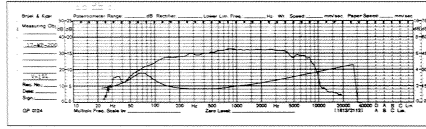


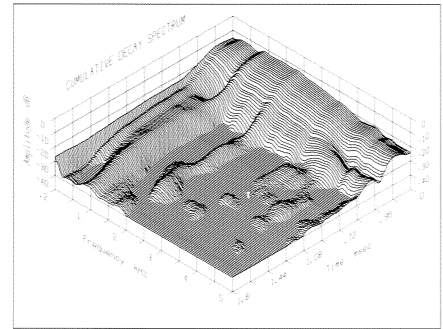
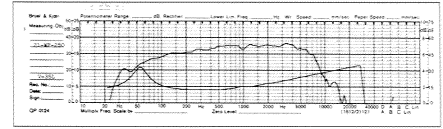
WP-130



17-WP-200



21-WP-250



Mineral Filled Poly Cone		
D	5	inch
Zn	8	$\Omega$
fo	60-5000	Hz
Lp	88	dB
fs	60	Hz
Pn	80	Watt
Pm	130	Watt
Sd	86	cm <sup>2</sup>
Mms	7.3	g
Vd	40	cm <sup>3</sup>
Rms	2.05	kg/s
Cms	0.97x10 <sup>-3</sup>	m/N
Cas	0.72x10 <sup>-7</sup>	m <sup>5</sup> /N
Vas	10	dm <sup>3</sup>
Re	5.7	$\Omega$
Le	0.7	mH
Dvc	25	mm
Hvc	14	mm
Hag	6.0	mm
Qms	1.38	-
Qes	0.43	-
Qts	0.33	-
Bxl	6.0	T.m
Vb	3-12	dm <sup>3</sup>

Mineral Filled Poly Cone		
D	7	inch
Zn	8	$\Omega$
fo	37-5000	Hz
Lp	88	dB
fs	37	Hz
Pn	100	Watt
Pm	160	Watt
Sd	136	cm <sup>2</sup>
Mms	14	g
Vd	83	cm <sup>3</sup>
Rms	2.10	kg/s
Cms	1.35x10 <sup>-3</sup>	m/N
Cas	0.25x10 <sup>-6</sup>	m <sup>5</sup> /N
Vas	35	dm <sup>3</sup>
Re	5.8	$\Omega$
Le	0.55	mH
Dvc	32	mm
Hvc	14	mm
Hag	6.0	mm
Qms	1.55	-
Qes	0.45	-
Qts	0.35	-
Bxl	6.5	T.m
Vb	10-30	dm <sup>3</sup>

Mineral Filled Poly Cone		
D	8	inch
Zn	8	$\Omega$
fo	25-4000	Hz
Lp	91	dB
fs	25	Hz
Pn	120	Watt
Pm	180	Watt
Sd	235	cm <sup>2</sup>
Mms	21.5	g
Vd	113	cm <sup>3</sup>
Rms	1.75	kg/s
Cms	1.92x10 <sup>-3</sup>	m/N
Cas	1.05x10 <sup>-6</sup>	m <sup>5</sup> /N
Vas	148	dm <sup>3</sup>
Re	5.8	$\Omega$
Le	0.80	mH
Dvc	40	mm
Hvc	12	mm
Hag	6.0	mm
Qms	1.90	-
Qes	0.34	-
Qts	0.29	-
Bxl	7.6	T.m
Vb	20-50	dm <sup>3</sup>

