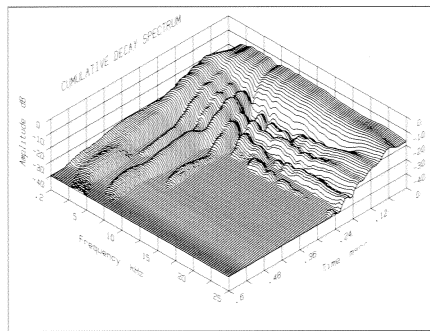
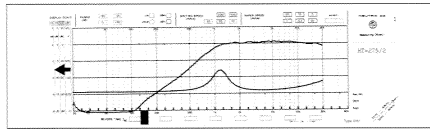
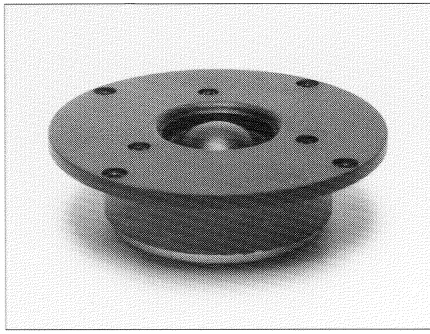
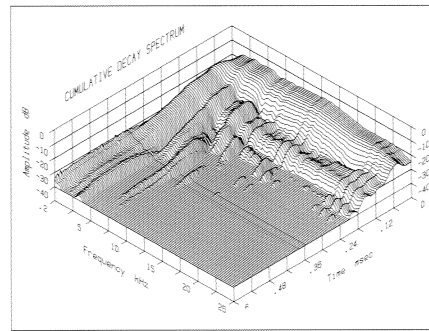
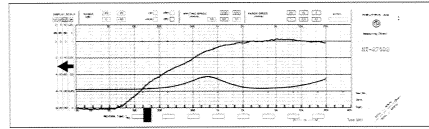
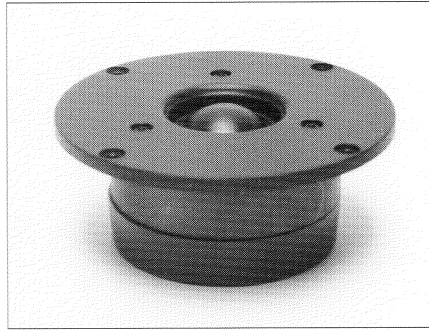


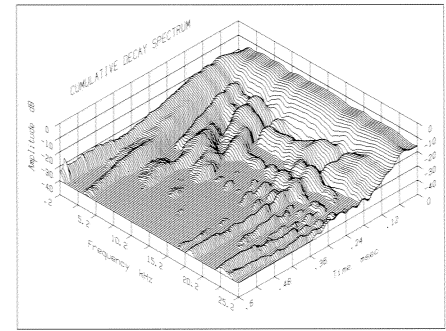
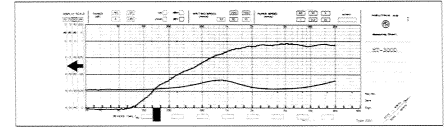
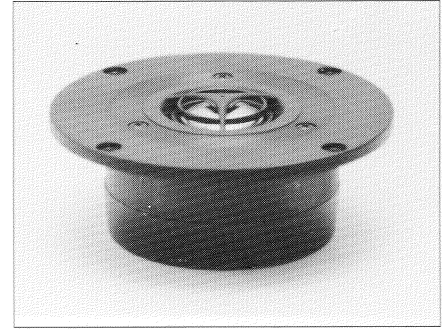
HT-275/2



HT-275D2



HT-300D



Silk-Fabric Dome

D	1	inch
Zn	6	Ω
fo	2500-33000	Hz
Lp	91/92	dB
fs	1000	Hz

Pn	120	Watt
Pm	160	Watt

Sd	7.1	cm ²
Mms	0.29	g
Vd	0.32	cm ³
Rms	0.98	kg/s

Cms	8.71x10 ⁻⁵	m/N
Cas	2.10x10 ⁻¹¹	m ⁵ /N
Vas	2.39x10 ⁻³	dm ³

Re	4.6	Ω
Le	0.15	mH
Dvc	25	mm
Hvc	1.6	mm
Hag	2.0	mm

Qms	1.86	-
Qes	1.03	-
Qts	0.66	-

Bxl	2.6	T.m
Vb	-	dm ³

Silk-Fabric Dome

D	1	inch
Zn	6	Ω
fo	1500-35000	Hz
Lp	90/91	dB
fs	620	Hz

Pn	120	Watt
Pm	160	Watt

Sd	7.1	cm ²
Mms	0.29	g
Vd	0.32	cm ³
Rms	1.45	kg/s

Cms	2.27x10 ⁻⁴	m/N
Cas	5.48x10 ⁻¹¹	m ⁵ /N
Vas	7.65x10 ⁻³	dm ³

Re	4.6	Ω
Le	0.15	mH
Dvc	25	mm
Hvc	1.6	mm
Hag	2.0	mm

Qms	0.78	-
Qes	0.60	-
Qts	0.34	-

Bxl	2.6	T.m
Vb	-	dm ³

Soft Metal Al/Mg Alloy

D	1	inch
Zn	6	Ω
fo	1500-45000	Hz
Lp	89	dB
fs	720	Hz

Pn	120	Watt
Pm	160	Watt

Sd	7.1	cm ²
Mms	0.34	g
Vd	0.32	cm ³
Rms	1.55	kg/s

Cms	1.45x10 ⁻⁴	m/N
Cas	7.31x10 ⁻¹¹	m ⁵ /N
Vas	1.02x10 ⁻²	dm ³

Re	4.6	Ω
Le	0.15	mH
Dvc	25	mm
Hvc	1.6	mm
Hag	2.0	mm

Qms	0.99	-
Qes	0.90	-
Qts	0.47	-

Bxl	2.6	T.m
Vb	-	dm ³

